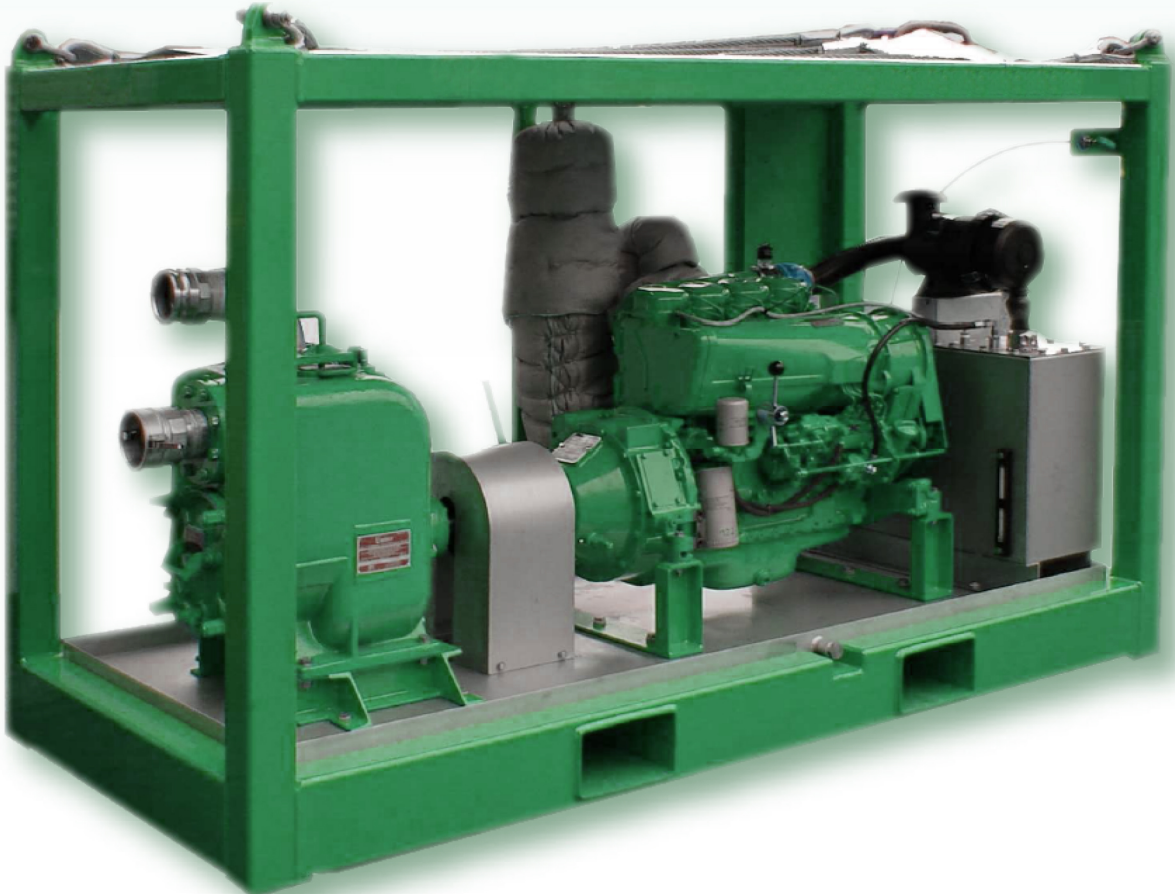


# CENTRIFUGAL PUMP

DIESEL DRIVEN



## GENERAL OVERVIEW

The pump can be used as feed pump to our filtration units. The diesel driven pump is built in an offshore proof DNV certified frame including manual dry clutch, day tank, forklift pockets, lifting slings, drip pan and motor protection guard. The unit is designed for easy and reliable operation and requires minimum maintenance.

## FEATURES

- Filterpress
- VPL DE Unit
- Duplex cartridge unit
- TwinOmatic automated filter
- Slurry skids
- Centrifugal (feed) pumps
- Dust free powder dosing
- Systems
- Hose basket

## APPLICATIONS

- Well completion fluids
- Workover fluids
- Gravel pack fluids
- Waste water treatment

## TECHNICAL SPECIFICATIONS

ITEM	SPECIFICATION
<b>ENGINE DETAILS</b>	
Engine	DEUTZ
Type	F4L 912
Cylinders	4
Power	54 kW@ 2500 RPM (72 BHP)
Cooling	Air Cooled
Starter	Spring Starter
Protective Devices	Oil pressure, temperature, V-belt breaking
Day Tank	120 Liters
<b>PUMP DETAILS</b>	
Pump	Self priming pump; Gorman Rupp, Super U-serie
Rotational Speed	Up to 1800 rpm (adjustable through gas lever)
Maximum flow rate	150 m <sup>3</sup> /hr (15 BM) @ 1800 RPM SG1*
Maximum supply pressure	6.3 bar (92 psi) @ 1800 ROM SG1
Pump housing	Cast iron
Impeller	Stainless Steel
<b>CONNECTORS</b>	
Connection suction side	4" FIG. 100 UNION FEMALE
Connection outlet side	4" FIG. 100 UNION MALE
<b>FRAME DETAILS</b>	
Weight	2998 lbs (1360 kg)
Maximum supply pressure	<ul style="list-style-type: none"> <li>· DNV 2.7.1 certified</li> <li>· Forklift pockets</li> <li>· Lifting lugs</li> <li>· Engine protection</li> <li>· Roof</li> </ul>
Dimensions (Lx Wx H)	7.87 x 3.28 x 5.74 ft (2.4x 1.0x 1.75 m)

**New Cairo, Egypt**  
 5th Settlement,  
 North 90th Street  
 Villa 238  
 T: +20225381693  
 F: +20225381693  
 info@idecint.com

**Dubai, UAE**  
 JLT, Cluster W, Liwa Heights  
 Office 2301  
 P.O. Box 31956, Dubai  
 T: +971 4 4518052  
 F: +971 4 4518032  
 info@idecint.com

