



# ID-DNT TECHNICAL DATA

IDEC Solutions

## DESCRIPTION

The ID-DNT system is designed to process water based drilling fluids direct from the Shale Shaker underflow or Sand Trap. The ID-DNT uses dewatering chemistry to maximize separation of solids from the water based mud to produce a clear effluent.

This process minimizes or eliminates the use of mud-cleaners and centrifuges which can have high operating costs.

The recovered effluent may be reused for dilution into the Active Mud System or to make up new Drilling Fluids.

Depending on local regulations and the Drilling Fluids being processed, excess effluent may be discharged to the local environment.

Solids discharged from the system have a low moisture content (<25%) which allows for safe and simple on site handling and transportation.

The ID-DNT is unitized on a robust steel base skid which features a 4 point lift point for easy location at sites.



## Key Benefits

- Flow Rates up to 1,200gpm (272.5 m3/hr)
- Over 10 x Capacity of “standard dewatering systems”
- Allows the use of finer mesh screens on primary shakers when used in conjunction with a drying shaker
- Increases efficiency of the Solids Control System = Lower Mud cost
- Reduced water consumption and associated costs
- Reduced solid waste volume and associated costs
- Low Maintenance & reliable application
- Minimises use of high cost Centrifuges and ancillary equipment
- Reduces onsite manpower, footprint and rig move loads
- Flexible application for the treatment of other onsite waste water streams

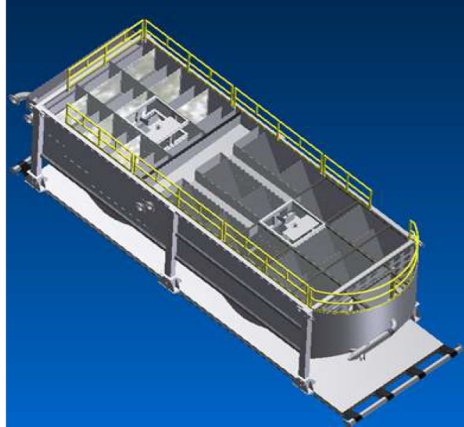
*“dedicated to exceeding customer expectations”*



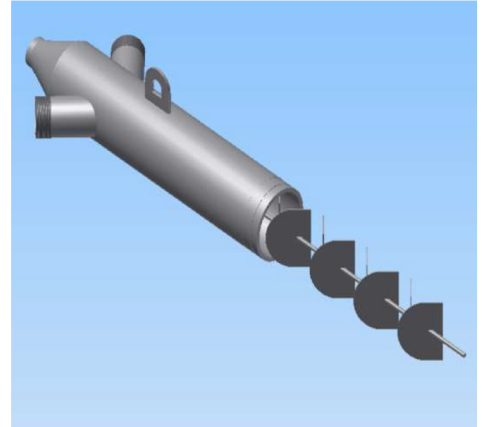
# ID-DNT TECHNICAL DATA

IDEC Solutions

**ID-DNT Internal Design**



**ID-DNT Chemical In-line Mixer**



**ID-DNT Water Discharge**



**ID-DNT Solids Discharge**



## **Technical Specifications**

Length: 9.5m (31.16 ft)  
Width: 3.5m (11.48 ft)  
Height: 4.3m (14.10 ft)  
Weight: 12.5 mt

Electrical Classification: EXD Zone 1 Area  
Voltage: 380/460 volt – 50/60hz  
Power Consumption - 269 KW (355 HP) = 331 KVA

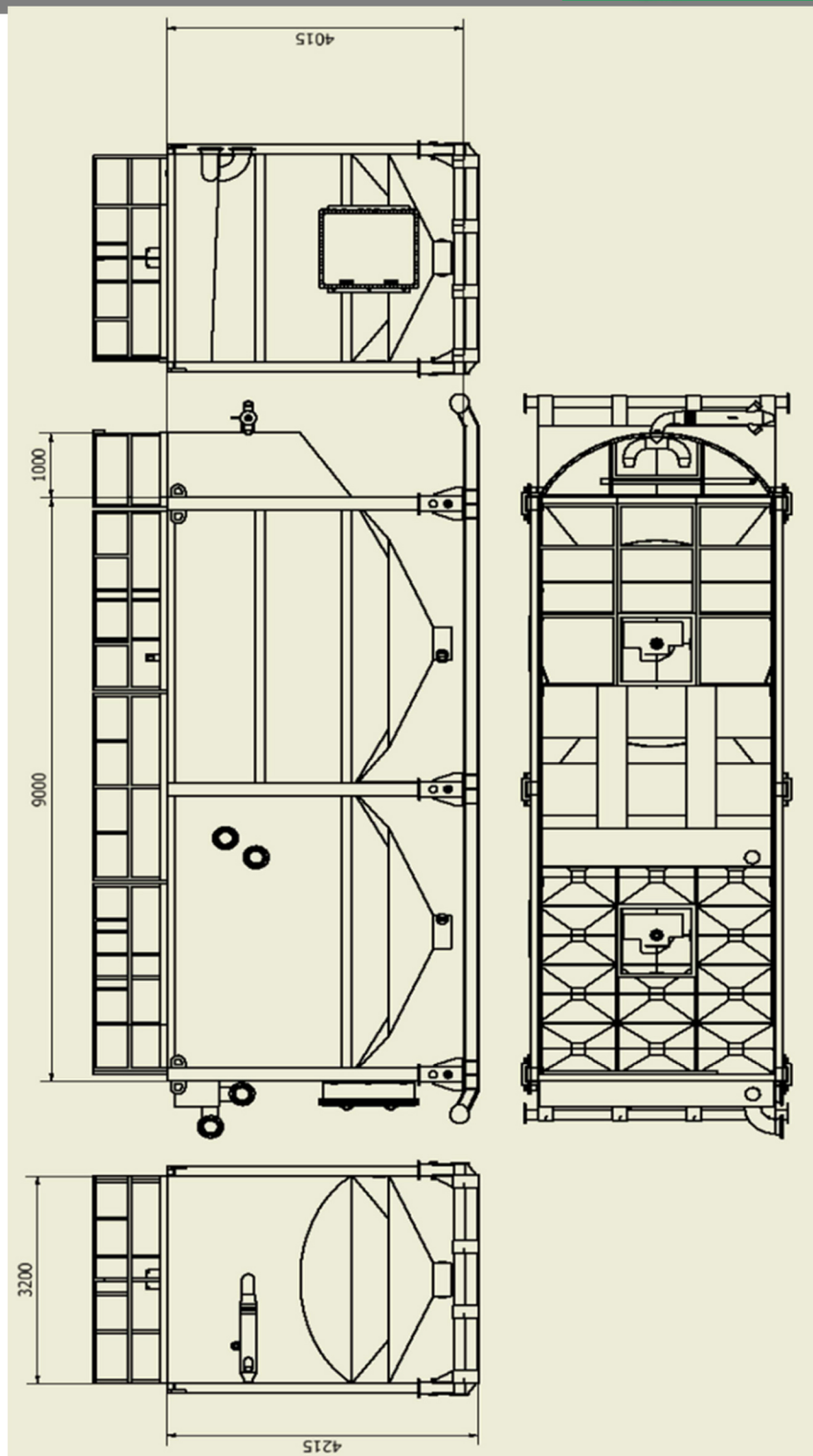
*“dedicated to exceeding customer expectations”*



# ID-DNT TECHNICAL DATA

## ID-DNT DIMENSIONAL DRAWING

IDEC Solutions



*“dedicated to exceeding customer expectations”*